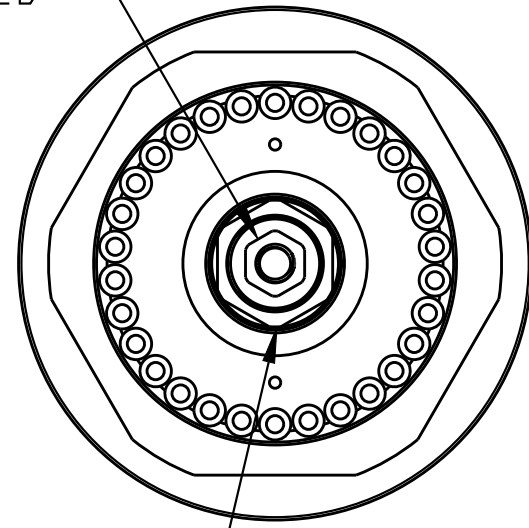
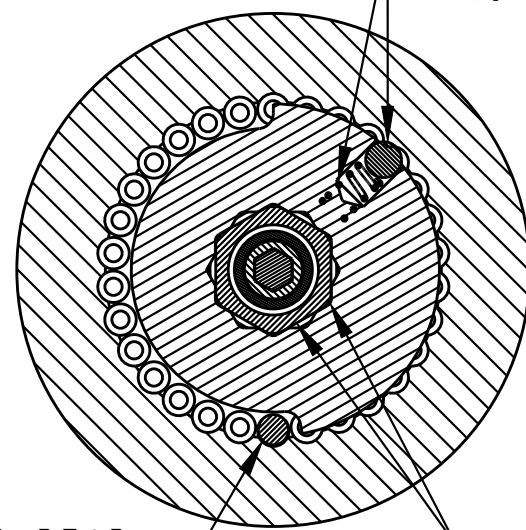


STEP 1: TORQUE HSC COUPLER TO 2 IN-LB



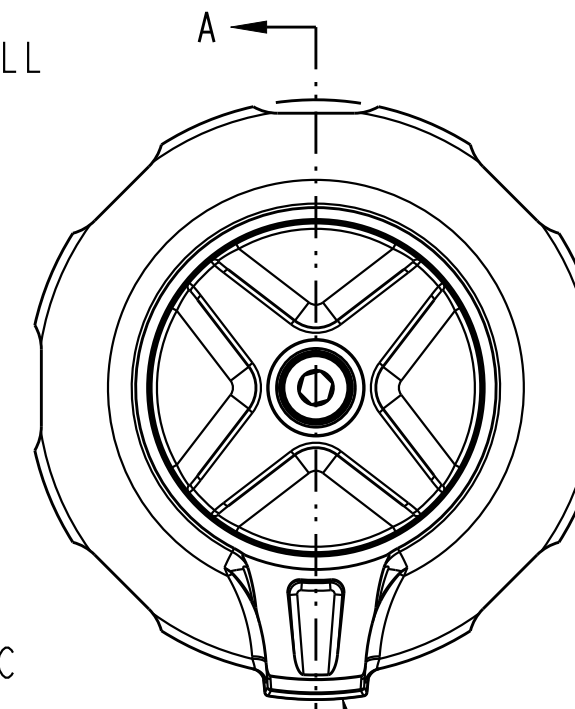
STEP 2: PEAK OF HSC COUPLER IS BETTER ALIGNED TO REAR OF FORK FOR PERFERED CLOSED LEVER POSITION, COULD BE FLAT IF IT WAS BETTER ALIGNED TO REAR OF FORK

STEP 2: STOP PIN ALIGNED TO REAR FACING PEAK (OR FLAT IF BETTER ALIGNED) OF HSC COUPLER, OR ROTATED SLIGHTLY CLOCKWISE IF HOLE FEATURE IS NOT IN ALIGNMENT



STEP 3: DETENT SPRING AND BALL INSTALLED IN HSC ADJUSTER

STEP 3: HEX FEATURE OF HSC COUPLER ALIGNED TO HEX FEATURE OF HSC ADJUSTER



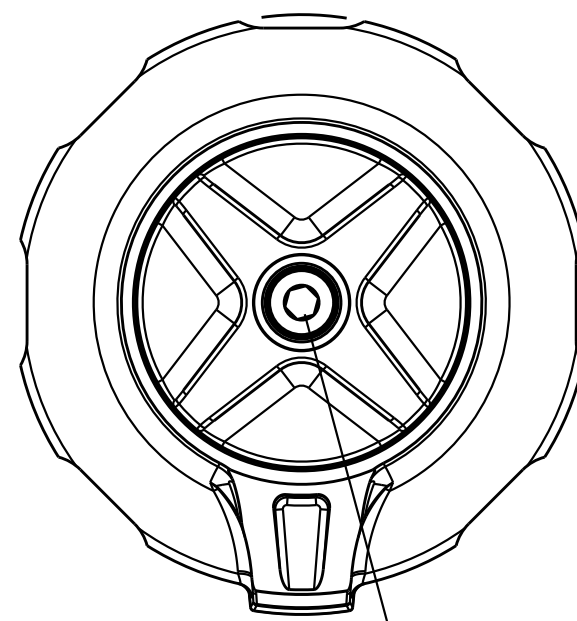
STEP 3: LEVER FEATURE OF HSC ADJUSTER ALIGNED TO REAR OF FORK

SECTION B-B

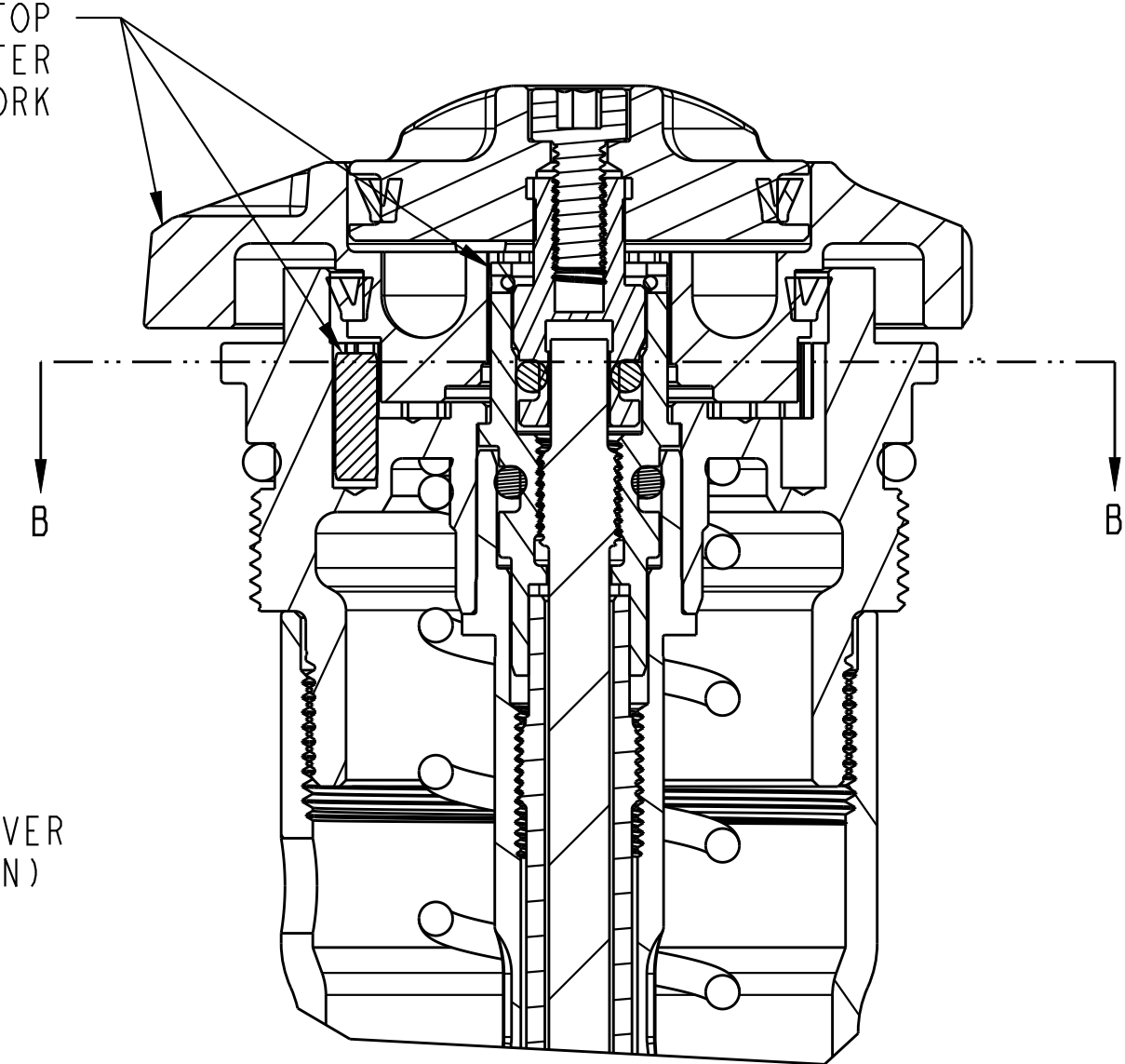
TOPCAP ADJUSTER SETUP INFORMATION:

- TORQUE HSC COUPLER TO 2.5 IN-LB
- LOCATE PEAK OR FLAT OF HSC COUPLER THAT IS BEST ALIGNED TO THE REAR OF THE FORK FOR PERFERED LEVER POSITION. LOCATE THE CORRESPONDING REAR HOLE LOCATION IN TOPCAP ALIGHEN TO PEAK OR FLAT AND INSTALL STOP PIN.  
NOTE: IT IS PREFERRED TO HAVE THE PIN BE SLIGHTLY ADVANCED IN THE CLOCKWISE ROTATION HOLE POSITION TO ASSURE FULL SHUTDOWN OF INTERNAL CIRCUIT.
- ALIGN LEVER OF HSC KNOB TO PEAK OR FLAT OF HSC COUPLER AND INSTALLED STOP PIN AND STARTING WITH REAR OF KNOB AT DETENT BALL INSTALL KNOB INTO TOPCAP, KEYING PEAK OR FLAT HEX FEATURE OF COUPLER TO HEX FEATURE OF KNOB ALIGNED TO THE REARWARD POSITION.
- CHECK HSC ADJUSTER SETUP BY ROTATING IT COUNTERCLOCKWISE, CONFIRMING 14-15 DETENT CLICKS TO FULL HARDSTOP ON PIN.
- ROTATE HSC LEVER TO FULL CLOCKWISE POSITION AND CHECK THAT THE DAMPER IS IN THE FIRM MODE. IF COMPRESSION FORCE IS WEAK REMOVE HSC KNOB AND REPEAT STEPS 1-5 AND SET THE STOP PIN TO THE NEXT HOLE POSITION IN THE CLOCKWISE ROTATION DIRECTION IN TOPCAP.
- INSTALL THE DETENT SPRING AND BALL IN THE TOP OF THE HSC ADJUSTER AND ALIGN THE LSC ADJSUTER TO THE LSC COUPLER AND INSTALL INTO THE HSC ADJUSTER WITH FASTENER.
- HOLDING THE LSC ADJUSTER INPLACE TORQUE THE FASTENER TO 4 IN-LB. CHECK DETENT FEEL BY ROTATING ADJUSTER AND CONFIRM 16-18 CLICKS (4 FULL TURNS).

STEP 3: PEAK OF HSC COUPLER, STOP PIN AND LEVER OF HSC ADJUSTER ALIGNED TO REAR OF FORK



15° (MAX CW - CCW LEVER INSTALL POSITION)



SECTION A-A SCALE 3:1